

visicolor® ECO Chlorid

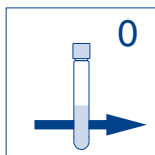
Chloride / Chlorure / Cloruro

Method(e) / Método
5181 1–50 mg/L Cl⁻

PF-12
470 nm

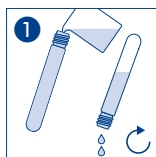
PF-12^{Plus}
470 nm

Advance
470 nm

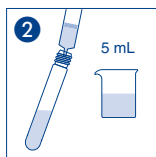


Null mit Probe
Blank with sample
Blanc avec échantillon
En blanco con muestra

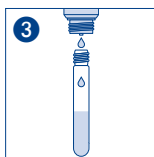
Nicht geeignet für Meerwasser
Not suitable for seawater
Ne convient pas à l'eau de mer
No es adecuado para el agua de mar



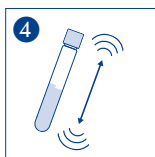
Küvetten spülen
Rinse test tube
Rincer les éprouvettes
Lavar los tubos



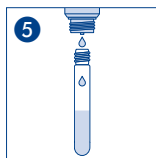
Probe
Sample
Echantillon
Muestra



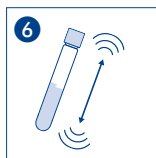
10 ∅ Cl-1



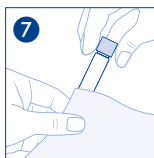
Schütteln
Shake
Agiter
Agitar



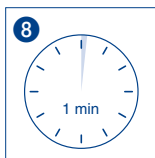
10 ∅ Cl-2



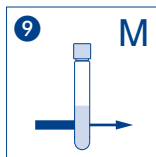
Schütteln
Shake
Agiter
Agitar



Säubern
Clean
Nettoyer
Limpiar



Warten
Wait
Attendre
Espere



Messung
Measurement
Mesure
Medición