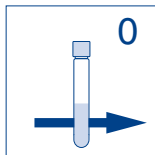


# visicolor® ECO Chlor 6 (frei)

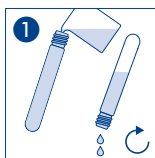
Chlorine (free) / Chlore (libre) / Cloro (libre)

Method(e) / Método	PF-3 Pool/ Drinking Water 530 nm	PF-3 Fish 530 nm	PF-12 540 nm	PF-12 <sup>Plus</sup> 540 nm	Advance 530 nm
5171 0.05–6.00 mg/L Cl <sub>2</sub>	■	■	■	■	■

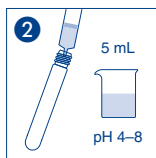


Null mit Probe  
Blank with sample  
Blanc avec échantillon  
En blanco con muestra

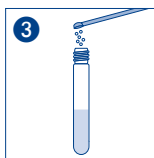
Geeignet für Meerwasser  
Suitable for seawater  
Convient à l'eau de mer  
Adecuado para el agua de mar



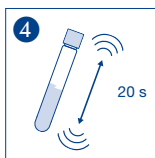
Küvetten spülen  
Rinse test tube  
Rincer les éprouvettes  
Lavar los tubos



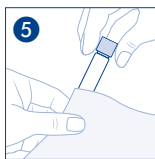
Probe  
Sample  
Echantillon  
Muestra



1 Cl<sub>2</sub>-1



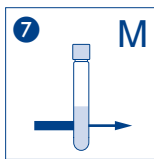
Schütteln  
Shake  
Agiter  
Agitar



Säubern  
Clean  
Nettoyer  
Limpiar



Warten  
Wait  
Attendre  
Espere

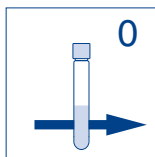


Messung  
Measurement  
Mesure  
Medición

# visicolor® ECO Chlor 6 (gesamt)

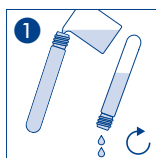
## Chlorine (total) / Chlore (total) / Cloro (total)

Method(e) / Método	PF-3 Pool/ Drinking Water	PF-3 Fish	PF-12	PF-12 <sup>Plus</sup>	Advance
5172 0.05–6.00 mg/L Cl <sub>2</sub>	530 nm	530 nm	540 nm	540 nm	530 nm

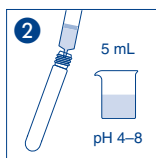


Null mit Probe  
Blank with sample  
Blanc avec échantillon  
En blanco con muestra

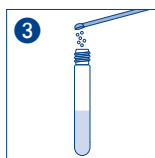
Geeignet für Meerwasser  
Suitable for seawater  
Convient à l'eau de mer  
Adecuado para el agua de mar



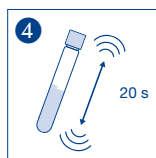
Küvetten spülen  
Rinse test tube  
Rincer les éprouvettes  
Lavar los tubos



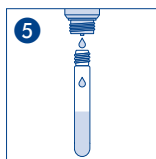
Probe  
Sample  
Echantillon  
Muestra



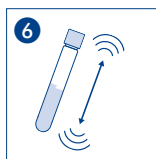
1  $\text{Cl}_2$ -1



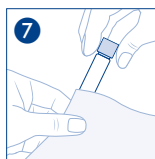
Schütteln  
Shake  
Agiter  
Agitar



3  $\text{Cl}_2$ -2



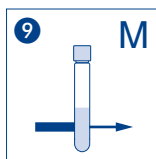
Schütteln  
Shake  
Agiter  
Agitar



Säubern  
Clean  
Nettoyer  
Limpiar



Warten  
Wait  
Attendre  
Espere



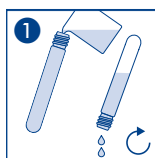
Messung  
Measurement  
Mesure  
Medición

**visocolor® ECO Chlor 6 (gebunden)**

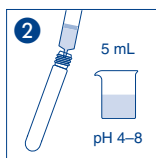
Chlorine (combined) / Chlore (combiné) / Cloro (ligado)

Method(e) / Método	PF-3 Pool/ Drinking Water	PF-3 Fish	PF-12 <sup>Plus</sup>	Advance
5353 0.05–2.00 mg/L Cl <sub>2</sub>	530 nm	530 nm	540 nm	530 nm

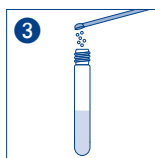
Geeignet für Meerwasser  
Suitable for seawater  
Convient à l'eau de mer  
Adecuado para el agua de mar



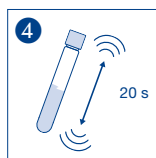
1  
Küvetten spülen  
Rinse test tube  
Rincer les éprouvettes  
Lavar los tubos



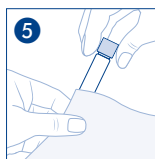
2  
Probe  
Sample  
Echantillon  
Muestra



3  
1  $\text{Cl}_2-1$



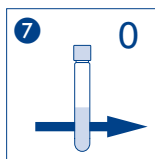
4  
Schütteln  
Shake  
Agiter  
Agitar



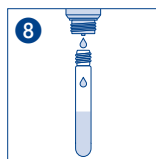
5  
Säubern  
Clean  
Nettoyer  
Limpiar



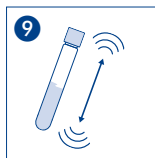
6  
Warten  
Wait  
Attendre  
Espere



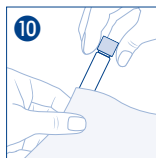
7  
Null  
Blank  
Blanc  
Blanco



8  
3  $\text{Cl}_2-2$



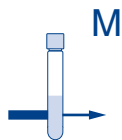
9  
Schütteln  
Shake  
Agiter  
Agitar



10  
Säubern  
Clean  
Nettoyer  
Limpiar



11  
Warten  
Wait  
Attendre  
Espere



M  
Messung  
Measurement  
Mesure  
Medición