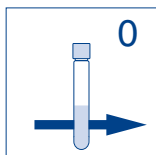


visicolor® ECO DEHA

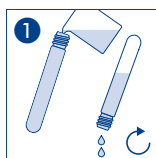
DEHA/DEHA/DEHA

Method(e) / Método		PF-12 ^{Plus}	Advance
		540 nm	560 nm
5241	0,005–0,500 mg/L DEHA	■	■
5242	0.010–0.600 mg/L Carbo	■	■
5243	0,010–1,000 mg/L Hydro	■	■
5244	0.025–1.500 mg/L ISA	■	■
5245	0.015–1.000 mg/L MEKO	■	■

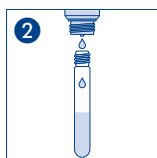


Null mit Probe
Blank with sample
Blanc avec échantillon
En blanco con muestra

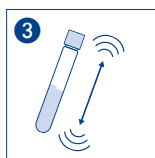
Geeignet für Meerwasser
Suitable for seawater
Convient à l'eau de mer
Adecuado para el agua de mar



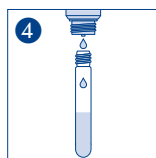
Küvetten spülen
Rinse test tube
Rincer les éprouvettes
Lavar los tubos



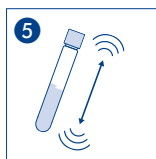
4 ⬧ DEHA-1



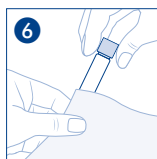
Schütteln
Shake
Agiter
Agitar



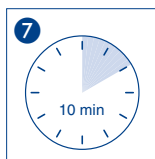
4 ⬧ DEHA-2



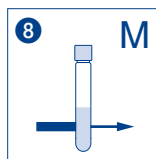
Schütteln
Shake
Agiter
Agitar



Säubern
Clean
Nettoyer
Limpiar



Warten
Wait
Attendre
Espere



Messung
Measurement
Mesure
Medición