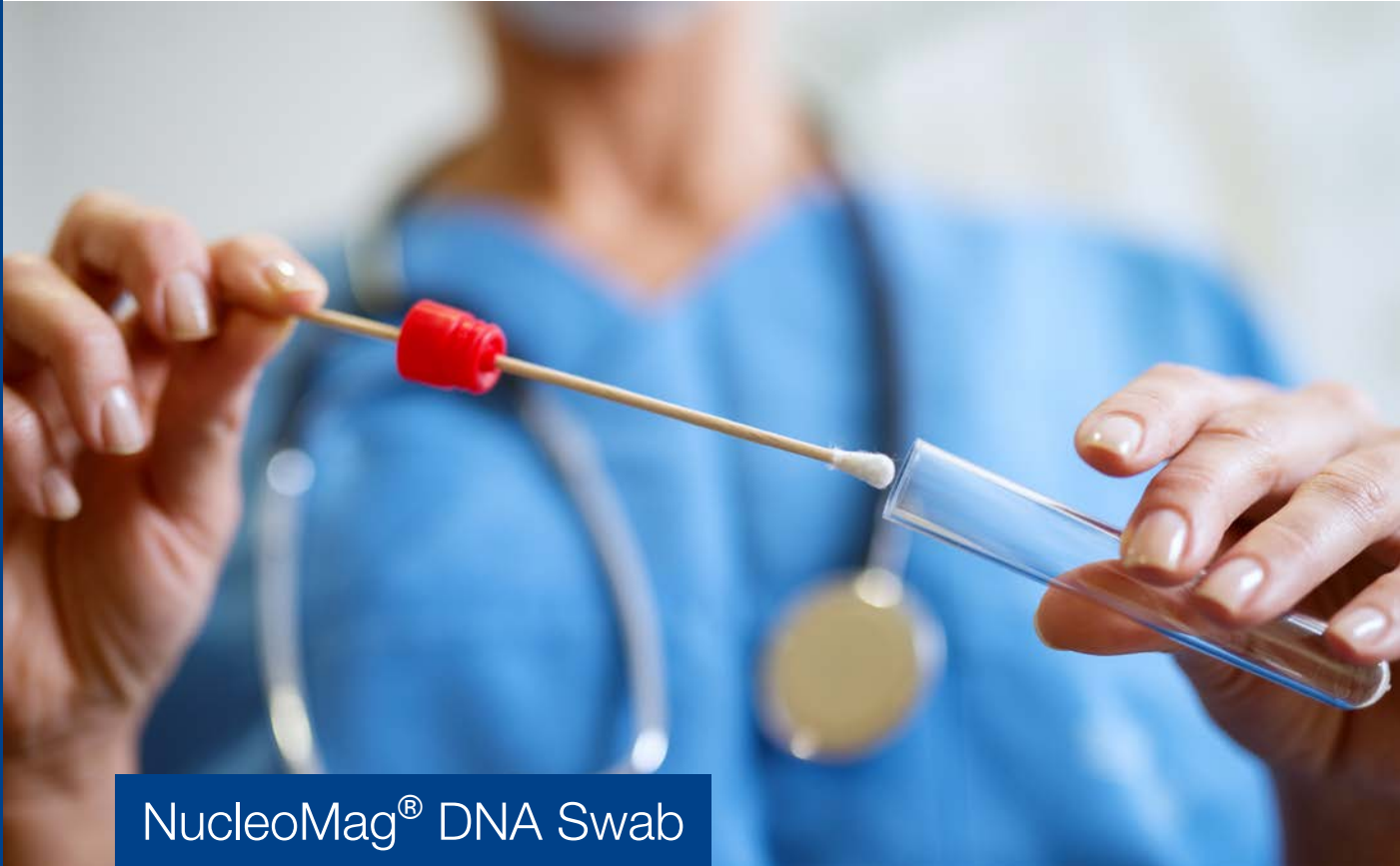


MACHEREY-NAGEL

DNA isolation from swabs

Bioanalysis



NucleoMag[®] DNA Swab

- High throughput DNA isolation for genetic testing
- Developed for cotton as well as synthetic swabs
- Combine with NucleoSpin[®] Forensic Filters for convenient sample prep

DNA isolation from swabs

NucleoMag® DNA Swab

Get the most out of your swab sample

The NucleoMag® DNA Swab kit allows the purification of genomic DNA from common swab types in a high throughput format. We validated the kit for standard cotton swabs as well as synthetic flocked swabs (e.g., COPAN FLOQSwabs™) which are widely used in genetic screening labs and applied testing. For most convenient handling, lysis and subsequent separation of lysate from swab material can be performed with our NucleoSpin® Forensic Filters.

Product at a glance



NucleoMag® DNA Swab

Technology and format	Highly reactive superparamagnetic beads
Processing	Automated or manual
Sample material	Cotton or synthetic swabs
Sample amount	300 µL reconstituted swab lysate
Typical yield	1–3 µg DNA
Fragment size	> 300 bp–approx. 50 kbp; depending on sample processing
Elution volume	50–100 µL

Product to be used for research purposes only

Proven versatility

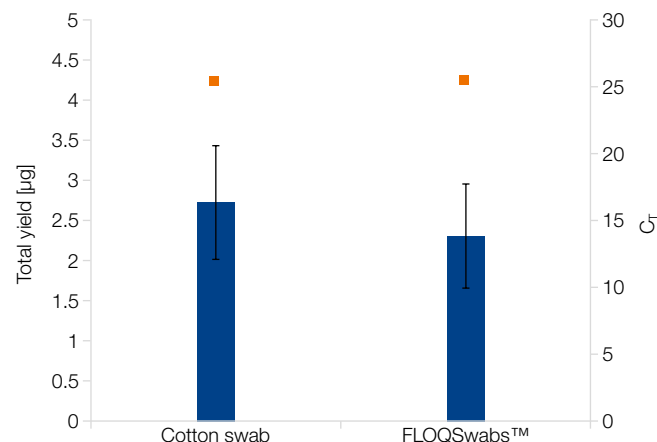


Successfully tested for detection of 37 different human pathogens from various swab types.

Including

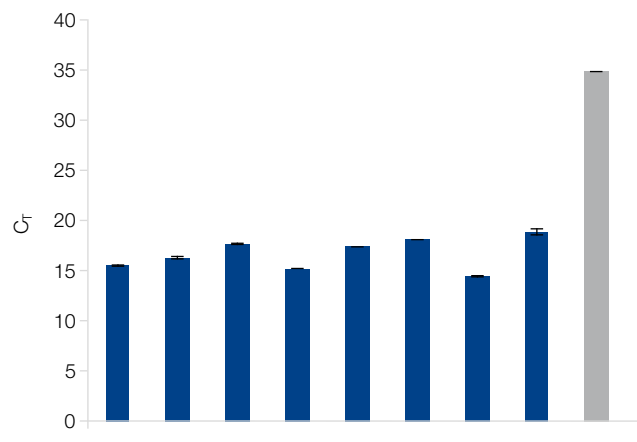
<i>Candida sp.</i>	<i>Mycoplasma sp.</i>
<i>Chlamydia sp.</i>	<i>Neisseria gonorr.</i>
<i>Gardnerella vaginalis</i>	<i>Pseudomonas sp.</i>
<i>Herpes simplex</i>	<i>Staphylococcus sp.</i>
<i>Klebsiella oxytoca</i>	<i>Streptococcus sp.</i>
<i>Lactobacillus jensenii</i>	<i>Trichomonas sp.</i>

Application data



Human genomic DNA yield and qPCR performance from different swab types

Buccal swabs (standard cotton swabs and COPAN FLOQSwabs™) were collected from > 6 individuals. Lysates were prepared using NucleoSpin® Forensic Filters. DNA was isolated on a KingFisher™ Flex platform according to the NucleoMag® DNA Swab standard protocol. qPCR performance was evaluated using the Quantifiler™ Human DNA Quantification assay.



Sensitive detection of bacterial DNA in human specimens

DNA was isolated from mouth swabs on a KingFisher™ Flex platform. qPCR targeting a bacterial 16S RNA gene demonstrates the sensitive detection of bacteria from swab specimens.

Ordering information

Product	Specifications	Preps	REF
NucleoMag® DNA Swab	Magnetic bead-based kit for isolation of DNA from swabs	1 x 96 4 x 96 24 x 96	744601.1 744601.4 744601.24
NucleoSpin® Forensic Filters	Mini spin solution for incubation and lysate separation of swabs and other sample matrices (not included in the NucleoMag® DNA Swab kit)	10 50 250	740988.10 740988.50 740988.250

Trademarks: NucleoMag and NucleoSpin are registered trademarks of MACHEREY-NAGEL GmbH & Co KG
KingFisher and Quantifiler are trademarks of Thermo Fisher Scientific. FLOQSwabs is a registered trademark of COPAN Diagnostics Inc.

www.mn-net.com

MACHEREY-NAGEL



MACHEREY-NAGEL GmbH & Co. KG
Valencienner Str. 11
52355 Düren · Germany

DE Tel.: +49 24 21 969-0 info@mn-net.com
CH Tel.: +41 62 388 55 00 sales-ch@mn-net.com
FR Tel.: +33 388 68 22 68 sales-fr@mn-net.com
US Tel.: +1 888 321 62 24 sales-us@mn-net.com

